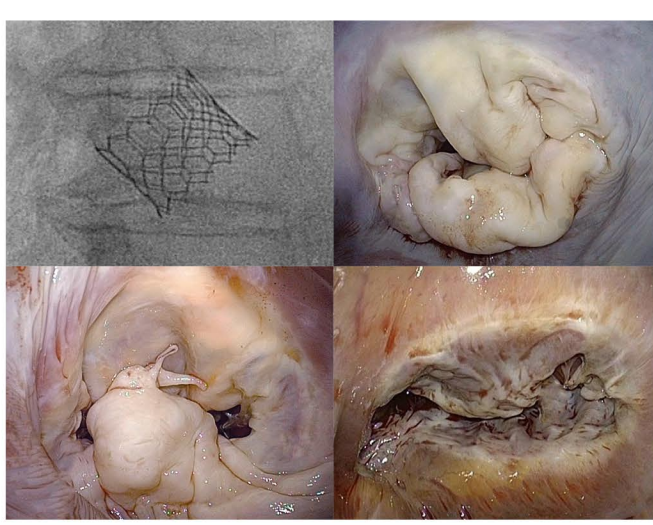




World Class Cardiovascular Care for the Hispanic Community | www.hispanicheartcenter.org

Javier Castillo, MD
Director, Hispanic Heart Center



Dr. Valentin Fuster, the Hispanic Heart Center, and the American Heart Association are partnering to conceptualize and launch a heart valve disease awareness campaign completely in Spanish. The initiative, mainly focus on education, seeks to encourage Hispanic patients to learn more about signs and symptoms of heart valve disease. In addition, patients will be informed about screening, importance of regular auscultation, significance of a heart murmur, timely echocardiography, and treatment options. Community advocacy has a tremendous impact on clinical burden from advanced heart valve disease.



The Office of Student Wellness and Health Services at Bronx Community College of the City University of New York (CUNY) will be hosting the Annual Men's Health Initiative on October 18th. The keynote lecture will be given by Dr. Javier Castillo, Director of the Hispanic Heart Center. Dr. Castillo's motivational talks, based on his personal experience and career journey, have been increasingly demanded by educational institutions and student organizations. Bronx Community College is a Hispanic Serving Institution (HSI) that offers programs to 11,500 students from 100 countries of which 66% are Hispanic.



The Mitral Foundation, a nonprofit organization linked to the Department of Cardiovascular Surgery, will host a live streaming surgical symposium in January. David Adams, program director, will demonstrate a spectrum of mitral valve repair techniques to national and international surgeons and cardiovascular specialists willing to learn the latest in this field. These techniques will be broadcasted from the operating room to an auditorium in Mexico City, Mexico. The Hispanic Heart Center will help to coordinate this pioneering event overseas with surgeons from Latin America



The United States annually honors the Hispanic community with a Hispanic Heritage Month celebration that runs from September 15th to October 15th. This is also extended to Canada and Latin America. Hispanics make up 17.3% of the US population (55.3M, being the second-largest ethnic group). People of Mexican origin account for a total of two-thirds. 75% of Hispanics speaks Spanish at home. 70% of Hispanics over 65 years-old live in four states: California, Texas, New York, and Florida. By 2050, the Hispanic population is projected to be 119M.



The Spanish Society of Cardiology gathered in Sevilla more than 4000 cardiovascular specialists. The Hispanic Heart Center was present at the plenary session on mitral valve disease. The XVIII Annual Meeting of the National Cardiology Association of Mexico took place in Merida, Yucatan. Dr. Javier Castillo led the plenary session on current controversies in management of mitral valve disease.

Making an Impact on Patient Education


Structural heart disease is our specialty. We strive to proceed with a thorough history for evaluation of causes and symptoms, accurate assessment of the severity of the valvular abnormality by examination, pertinent diagnostic testing, and complete quantification of the severity of valve dysfunction and benefit of each potential therapeutic intervention. We have adapted, simplified, and fully translated the guidelines to improve and maximize patient understanding about indications and timing.

Severe Aortic Stenosis Estenosis Aórtica Severa					
DEGREE GRADO	SYMPTOMS SÍNTOMAS	LVEF EF	OTHER CONDITIONS OTRAS CONDICIONES	RECOMMENDATION RECOMENDACIÓN	CLASS CLASE
Severe Severa	✓	-	-	Aortic valve replacement Reemplazo valvular aórtico	I
Severe Severa	-	<50%	-	Aortic valve replacement Reemplazo valvular aórtico	I
Severe Severa	-	-	Undergoing other Sx Recebiendo otra cirugía	Aortic valve replacement Reemplazo valvular aórtico	I
Severe Severa	-	-	Abnormal ETT PE anormal	Aortic valve replacement Reemplazo valvular aórtico	Ila
Severe Severa	-	-	$V_{max} \geq 5 \text{ m/s}$ $\Delta P_{max} \geq 40 \text{ mmHg}$	Aortic valve replacement in the setting of low surgical risk Reemplazo valvular aórtico si el riesgo quirúrgico es bajo	Ila

I Strong Benefit >>> Risk **Ila** Moderate Benefit >>> Risk

EF: ejection fraction, LVEF: ejection fraction, LVEF: fracción de eyección del ventrículo izquierdo, LVEF: left ventricular ejection fraction, P: gradient, P: gradiente, PE: prueba de esfuerzo, Sx: signs and symptoms, Sx: surgery, Sx: síntoma, Sx: síntoma

Makrofsky RA et al. 2017 AHA/ACC guideline for the management of patients with Valvular Heart Disease: A Report of the American College of Cardiology/American Heart Association Task Force on Clinical Practice Guidelines. J Am Coll Cardiol. 2017;70(2):237-289





<https://www.hispanicheartcenter.org/portaldelpaciente>

Upcoming 2018 Academic Events

📍 BUENOS AIRES, ARGENTINA
Plenary session on mitral valve disease

Multiple Ways to Refer a Patient to the Hispanic Heart Center at The Mount Sinai Hospital

[@hispanicheart](#)