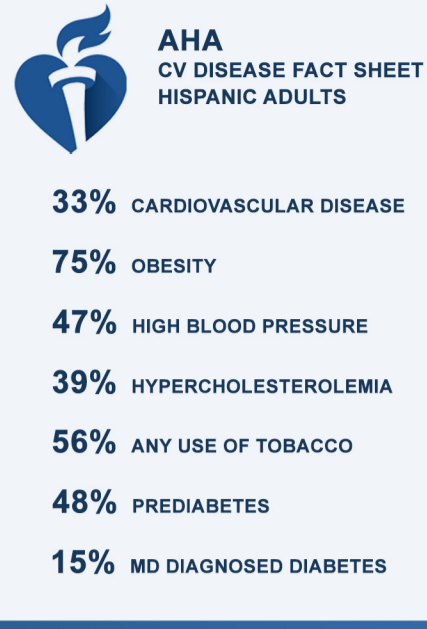
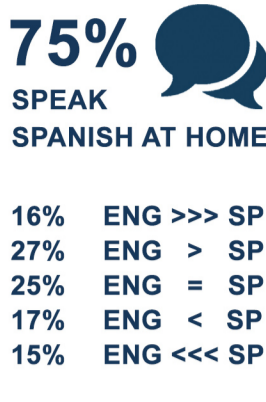
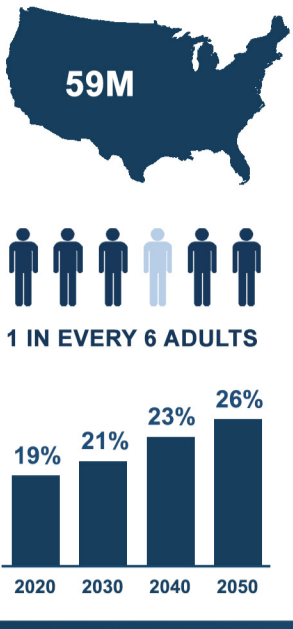
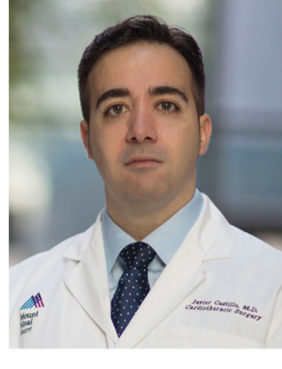




2019 DEMOGRAPHIC PROFILE OF THE HISPANIC POPULATION IN THE UNITED STATES



World Class Cardiovascular Care for the Hispanic Community | www.hispanicheartcenter.org

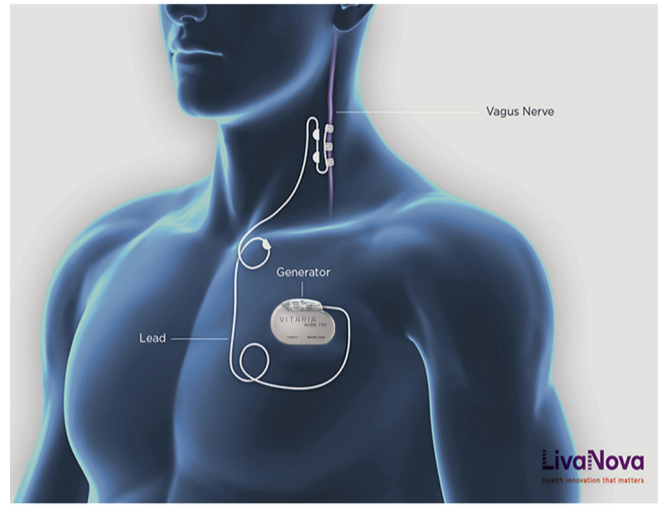


Dear All,
Welcome to our monthly e-newsletter. When I was a resident, I came to realize that cultural barriers may exist despite consents in multiple languages and simultaneous professional translation. This is very important when indications and risks must be meaningfully discussed. This triggered the creation of the Hispanic Heart Center.

Javier Castillo, MD
Director, Hispanic Heart Center

Estimados todos,
Bienvenidos a nuestro boletín electrónico mensual. Cuando era residente, pude darme cuenta de que las barreras culturales prevalecen muchas veces a pesar de disponer de traducción simultánea profesional o de tener consentimientos médicos en varios idiomas. Sin duda alguna, esto impulsó la conceptualización del Hispanic Heart Center.

Javier Castillo, MD
Director, Hispanic Heart Center



Promising Therapy for Patients with Severe CHF
NEW YORK | NEW YORK

The first NYS implantation of the Vitaris System in a patient enrolled in the Autonomic Regulation Therapy to Enhance Myocardial Function and Reduce Progression of Heart Failure with Reduced Ejection Fraction (ANTHEM-HFrEF) trial was performed in December by Dr. Javier Castillo (Cardiothoracic Surgery). Six months after, follow up with Dr. Johana Contreras (Heart Failure) revealed a significant improvement of the LVEF, great performance during the 6-minute walk, and NYHA Class I symptoms. Although the trial is still ongoing, positive results are expected to help patients with CHF.



Presence at the Largest Meetings in Latin America
NEW YORK | NEW YORK

The Hispanic Heart Center will be represented at the 2019 largest meetings in Latin America. Argentina, Colombia, and Mexico will host the most attended cardiovascular conferences in Spanish including the ACC Latin America Conference, Congreso Anual de Cirugía Cardíaca de México, the AATS Cardiovascular Valve Symposium, and the STS/EACTS Latin America. Doctor Javier Castillo will participate in multiple sessions, debates, and round tables on mitral valve disease. In addition, several wet labs and satellite symposiums will be organized to emphasize and expand the most important topics.



Spreading the Word about Heart Valve Disease
NEW YORK | NEW YORK

We continue to encourage Hispanic patients to learn more about signs and symptoms of heart valve disease. Our brochures inform about screening and importance of cardiac auscultation. You need an echocardiogram if you have a heart murmur (soplo cardiaco), shortness of breath (dificultad para respirar), weakness or dizziness (debilidad o mareo), chest pain or discomfort (dolor o presión en el pecho), fainting (desmayos), fatigue (fatiga), rapid or irregular heartbeat (arritmias), swollen abdomen or ankles and feet (hinchazón de abdomen, tobillos o pies).



Ranked by Expertscape in Several Fields
NEW YORK | NEW YORK

Expertscape bases its rankings on scientific publications. For any topic, Expertscape ranks physicians and scientists according to a) PubMed database search to find articles published in the past ten years b) Score assignment to each article based on publication year, type, and impact factor c) Order in authorship d) Adjustment of institutional influence e) Tallying the scores for all articles, authors, institutions, cities, regions, and countries. The Hispanic Heart Center is represented in fields such as mitral valve disease, mitral valve prolapse, and carcinoid heart disease.



Supporting Local Initiatives
FORT LEE | NEW JERSEY

The XXIX Medical Symposium of the Dominican Medical and Dental Societies took place in Fort Lee, NJ. Over 300 attendees represented several medical specialties including primary care, internal medicine, cardiology, and cardiovascular surgery. Doctor Jacobo Pena - Program Director - designed a multidisciplinary agenda with topics such as prevention of endocarditis after dental procedures or current burden of heart valve disease.

Making an Impact on Patient Education

Structural heart disease is our specialty. We strive to proceed with a thorough history for evaluation of causes and symptoms, accurate assessment of the severity of the valvular abnormality by examination, pertinent diagnostic testing, and complete quantification of the severity of valve dysfunction and benefit of each potential therapeutic intervention. We have adapted, simplified, and fully translated the guidelines to improve and maximize patient understanding about indications and timing.

Primary Severe Mitral Regurgitation Insuficiencia Mitral Severa Primaria					Severe Aortic Stenosis Estenosis Aórtica Severa						
SYMPTOMS	LVEF	LVEDD	OTHER CONDITIONS	RECOMMENDATION	CLASS	DEGREE	SYMPTOMS	LVEF	OTHER CONDITIONS	RECOMMENDATION	CLASS
✓	>50%	-	-	Mitral valve surgery (initial valve repair >>> mitral valve replacement) Cinugía valvular mitral (reparación valvular mitral >>> reemplazo valvular mitral)	I	Severe	✓	-	-	Aortic valve replacement Reemplazo valvular aórtico	I
✓	>50%	-	-	Mitral valve surgery (initial valve repair >>> mitral valve replacement) Cinugía valvular mitral (reparación valvular mitral >>> reemplazo valvular mitral)	IIa	Severe	-	<50%	-	Aortic valve replacement Reemplazo valvular aórtico	I
✓	>50%	-	Prohibitive risk	Transcatheter mitral valve repair Reparación valvular mitral transcatheter	IIa	Severe	-	Underlying other risk	Recibe otro riesgo	Aortic valve replacement Reemplazo valvular aórtico	I
-	30%-40%	-	-	Mitral valve surgery (initial valve repair >>> mitral valve replacement) Cinugía valvular mitral (reparación valvular mitral >>> reemplazo valvular mitral)	I	Severe	-	Abnormal ETT	PE normal	Aortic valve replacement Reemplazo valvular aórtico	IIa
-	-	>40mm	-	Mitral valve surgery (initial valve repair >>> mitral valve replacement) Cinugía valvular mitral (reparación valvular mitral >>> reemplazo valvular mitral)	I	Severe	-	W ₂ >20mm AP ₂ >10mmHg	-	Aortic valve replacement in the setting of low surgical risk Reemplazo valvular aórtico si el riesgo quirúrgico es bajo	IIa
-	>50%	>40mm	-	Mitral valve surgery (initial valve repair >>> mitral valve replacement) Cinugía valvular mitral (reparación valvular mitral >>> reemplazo valvular mitral)	IIa	Severe	-	-	-	-	-
-	>50%	>40mm	Progression LVF	Mitral valve surgery (initial valve repair >>> mitral valve replacement) Cinugía valvular mitral (reparación valvular mitral >>> reemplazo valvular mitral)	IIa	Severe	-	-	-	-	-
-	>50%	>40mm	Progression de DVI	Mitral valve surgery (initial valve repair >>> mitral valve replacement) Cinugía valvular mitral (reparación valvular mitral >>> reemplazo valvular mitral)	IIa	Severe	-	-	-	-	-
-	>50%	>40mm	New onset of AF	Mitral valve surgery (initial valve repair >>> mitral valve replacement) Cinugía valvular mitral (reparación valvular mitral >>> reemplazo valvular mitral)	IIa	Severe	-	-	-	-	-
-	>50%	>40mm	SPAP >50mmHg PASP >50mmHg	Mitral valve surgery (initial valve repair >>> mitral valve replacement) Cinugía valvular mitral (reparación valvular mitral >>> reemplazo valvular mitral)	IIa	Severe	-	-	-	-	-

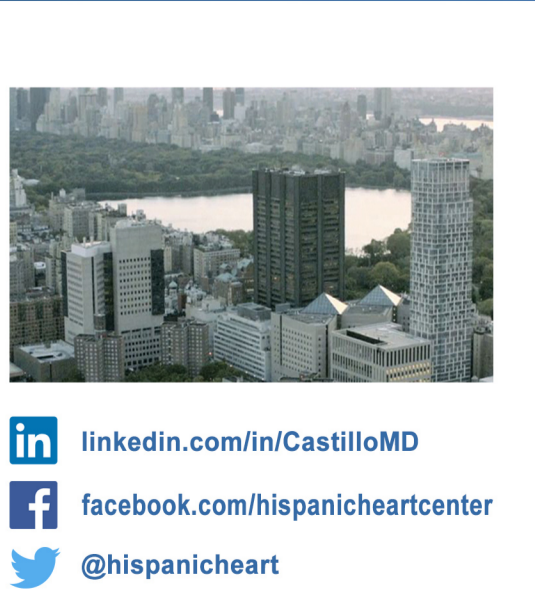
<https://www.hispanicheartcenter.org/portaldelpaciente>

Building a Referral Network for International Patients



Multiple Ways to Refer a Patient to the Hispanic Heart Center at The Mount Sinai Hospital

- +1 (212) 659-6800 or +1 (212) 659-6820
- +1 (212) 659-6818
- javier.castillo@mountsinai.org
- www.hispanicheartcenter.org/contacto
- HISPANIC HEART CENTER at The Mount Sinai Hospital
1190 Fifth Avenue, GP2W, Box 1028
New York, NY 10029



- [linkedin.com/in/CastilloMD](https://www.linkedin.com/in/CastilloMD)
- [facebook.com/hispanicheartcenter](https://www.facebook.com/hispanicheartcenter)
- [@hispanicheart](https://twitter.com/hispanicheart)